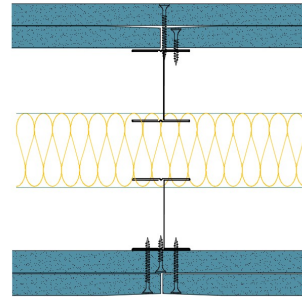


TWI50-B-60(50)(200) - SPEEDLINE System Data Sheet - Version V1 (24-10-23)

Twin SPEEDLINE 50mm 'I' Stud Partition @600mm Ctrs, with 2x BG Gyproc 15mm SoundBloc each side, 50mm APR



System Performance Breakdown

Fire Resistance:

BS476 Part 22:1987:

Test Ref & Date or Applied Ref & Report:

Max Height:

Thickness:

Duty Grade: BS 5234: Part 2:1992:

Sound Insulation:

90/90 Minutes (Integrity/Insulation).

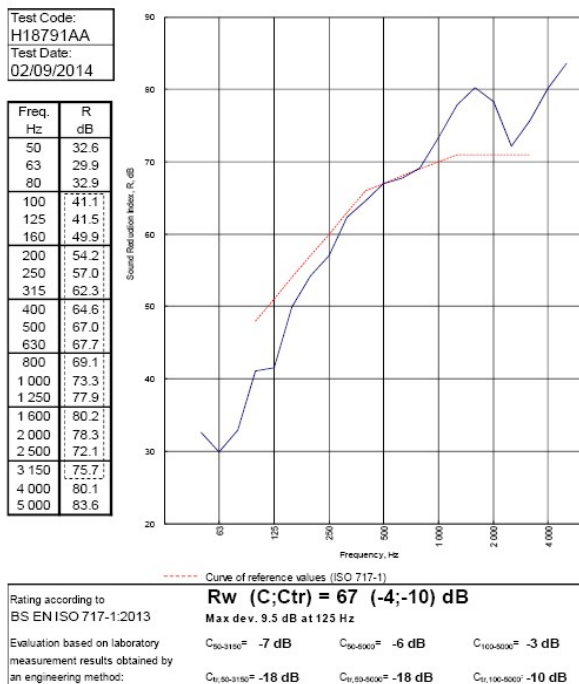
BTC 17440F - BRE Report P102396-1011A

Refer to Speedline Specification Clause

200 mm. (At Base Track, Excluding Finishes)

Severe - Annexes A-F

67 R_w dB, -10Ctr Date Tested or Assessed Against - 02/09/2014



TESTED AT ONE OF THE UKAS ACCREDITED LABORATORIES BELOW

B.T.C (H-Ref on Graph)	
B.R.E	
AIRO	
S.R.L	

Customer: Metsec plc Hepsec Division



BTC 18791A: Page 9 of 12

SPEEDLINE Drywall Systems, Adsetts House, 16 Europa View, Sheffield Business Park, Sheffield, S9 1XH.

Tel: 0114 231 8030.

Email: enquiries@speedlinedrywall.co.uk

(As per the requirements set out in ISO/IEC 17025:2017 regarding test data the results stated have been carried out by voestalpine Metsec plc as part of the contract to supply Speedline Metal Sections to SIG Plc)